



MOBILE APP VERSION 3.1

USER GUIDE

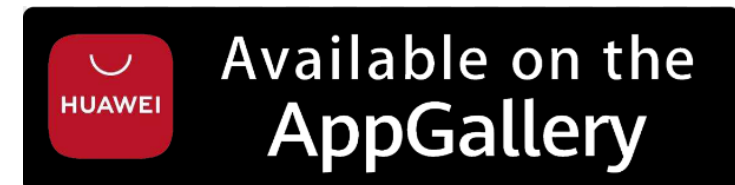
Download the App

Search and download **AsiaEBroker** from:

App Store (iOS)

Google Play Store (Android)

Huawei AppGallery



Tap the “+”
button and
type
“Apextrade”
Then click
Confirm

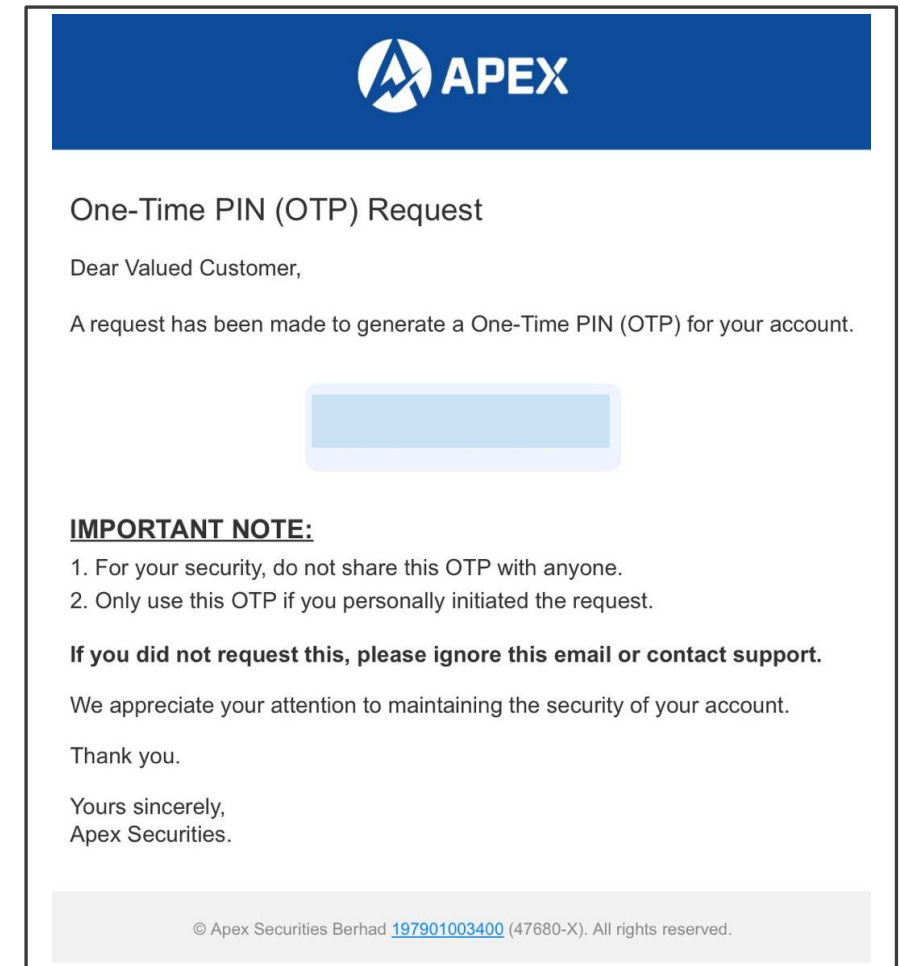
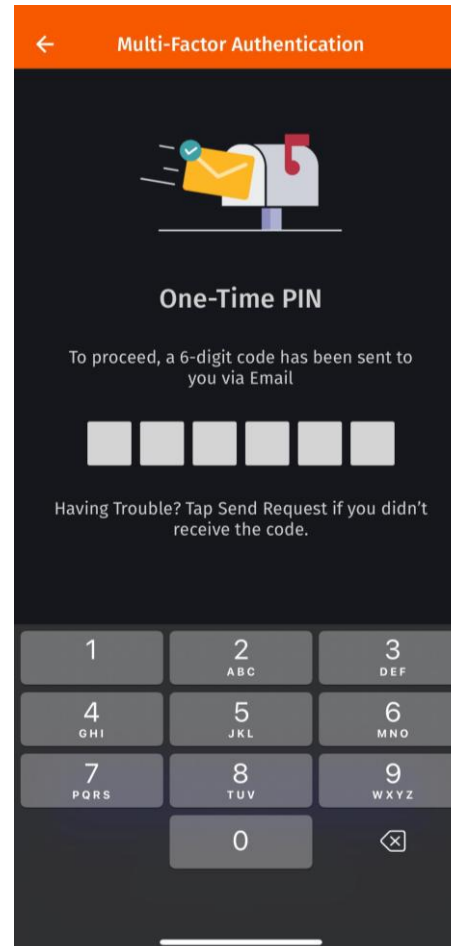
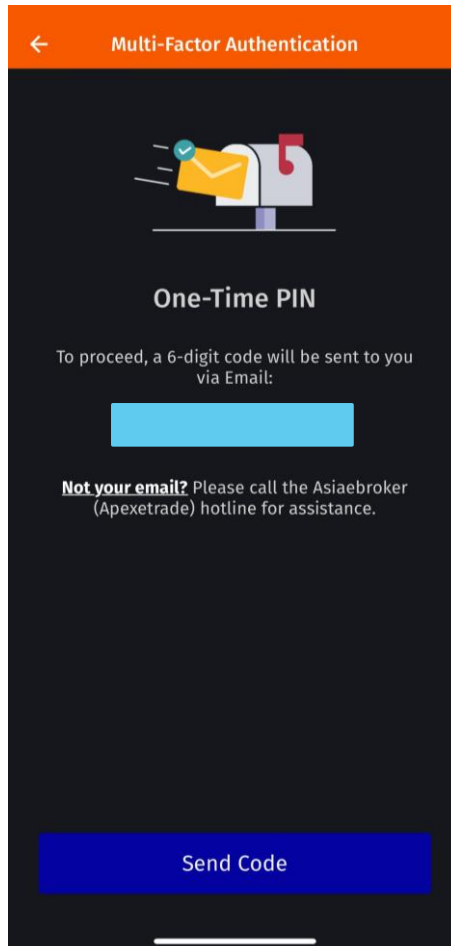
The top screenshot shows the 'Select Broker' screen with a red box around the '+' button in the top right corner. Below it is a modal titled 'Enter Broker Name' with a search bar containing 'Apextrade', a 'Confirm' button, and an 'Enter By Broker Code' option. The bottom screenshot shows the 'Select Broker' screen with a list of brokers, including 'Apextrade' by Apex Securities, which is highlighted with a blue background.

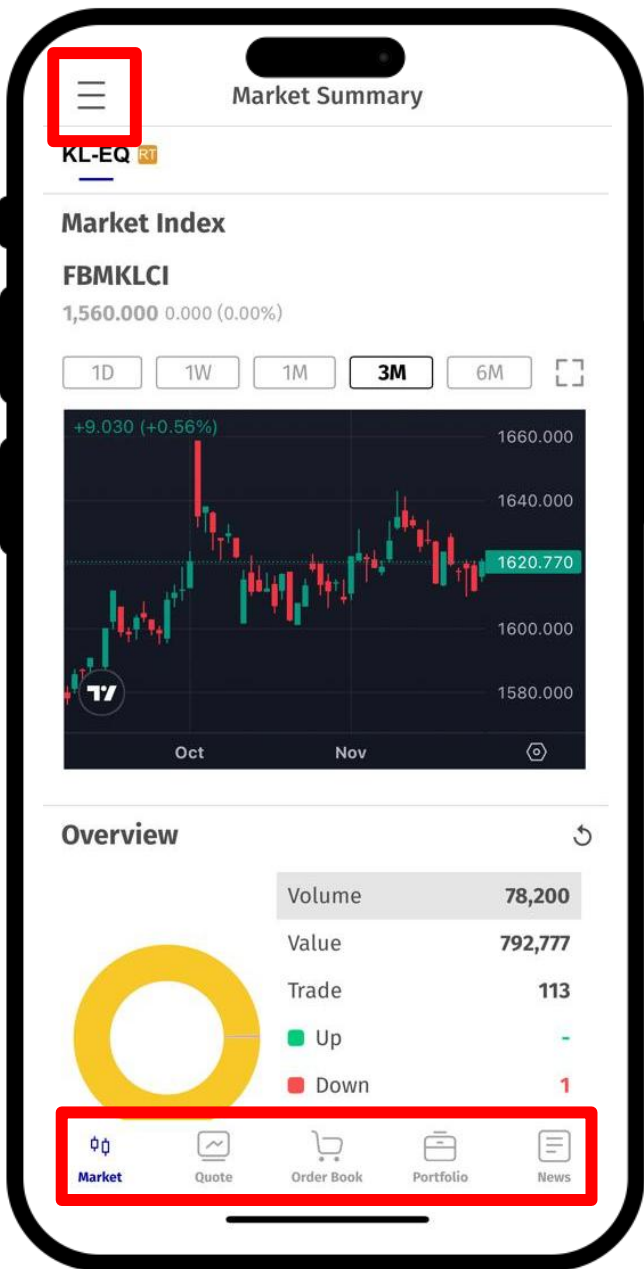
Use your
existing
account
credentials
to log in

The screenshot shows the Apex eTrade mobile app interface. At the top is a 'Change Broker' button. Below it is the Apex eTrade logo. A 'Sign In' button is centered, with a QR code icon below it. Below the sign-in section are input fields for 'User ID' and 'Password', a 'Remember Me' checkbox, and a 'Forgot Password?' link. A large blue 'Login' button is at the bottom. The footer contains 'English', 'V3.1.11', and 'Powered by N2N'.

Two-Factor Authentication (2FA)

Request a One-Time Pin (OTP). It will be sent to your registered email.





Main Menu Overview

At the bottom of the app you will see:

Market – Market overview

Quote – Stock prices, watchlist

Order Book – Check order status

Portfolio – View your holdings & P/L

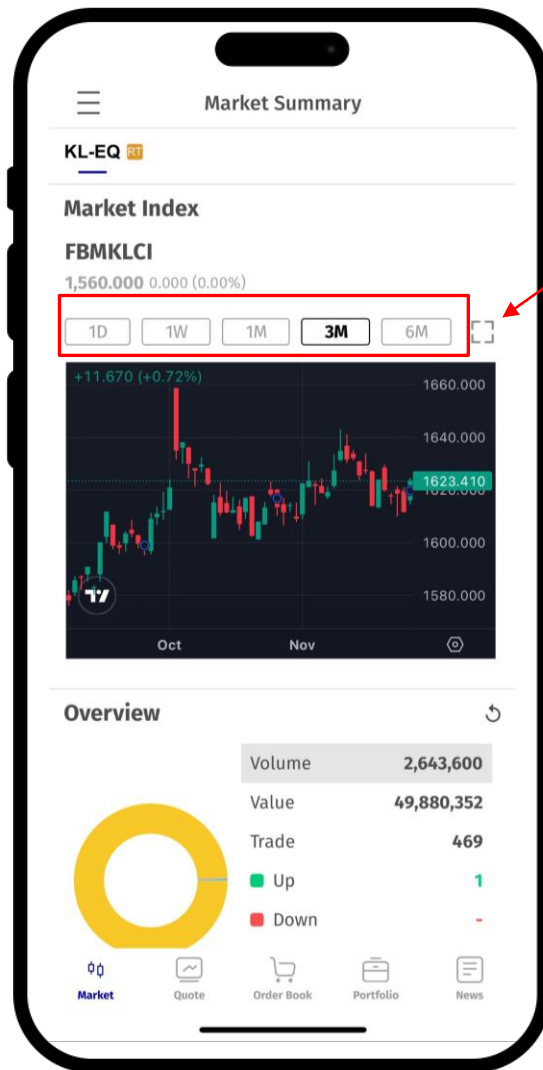
News – Market updates



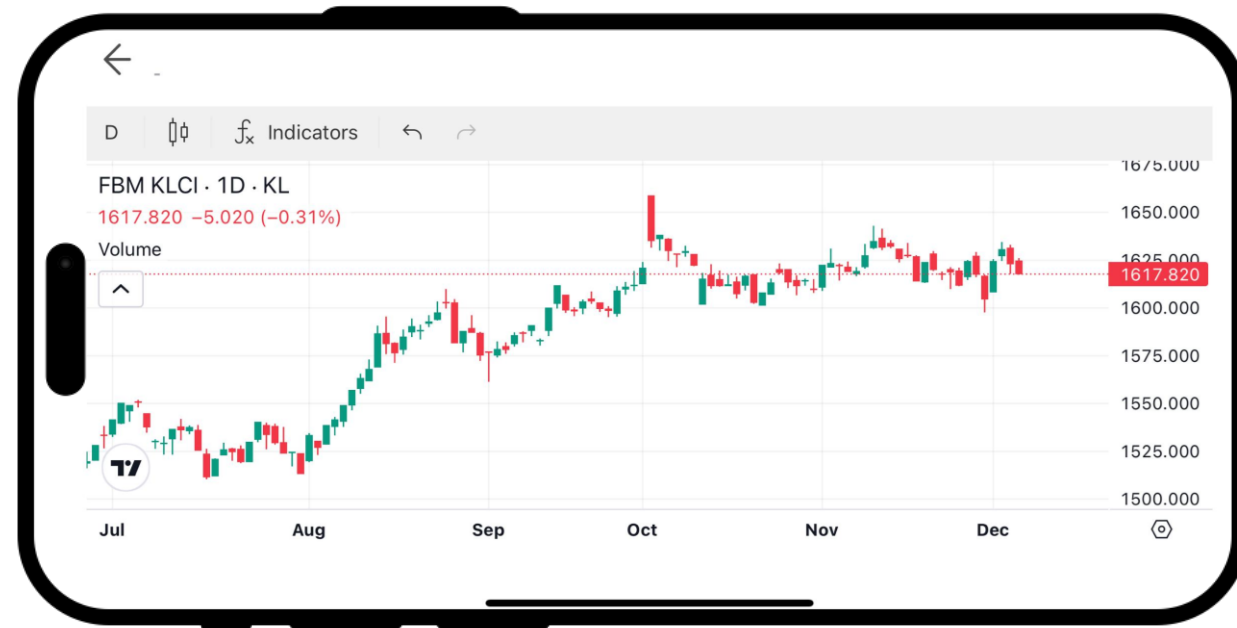
Tap the menu button and choose the option you prefer.

Market Summary

Select **D (Day)**, **W (Week)**, or **M (Month)** to change the chart between intraday and historical data.

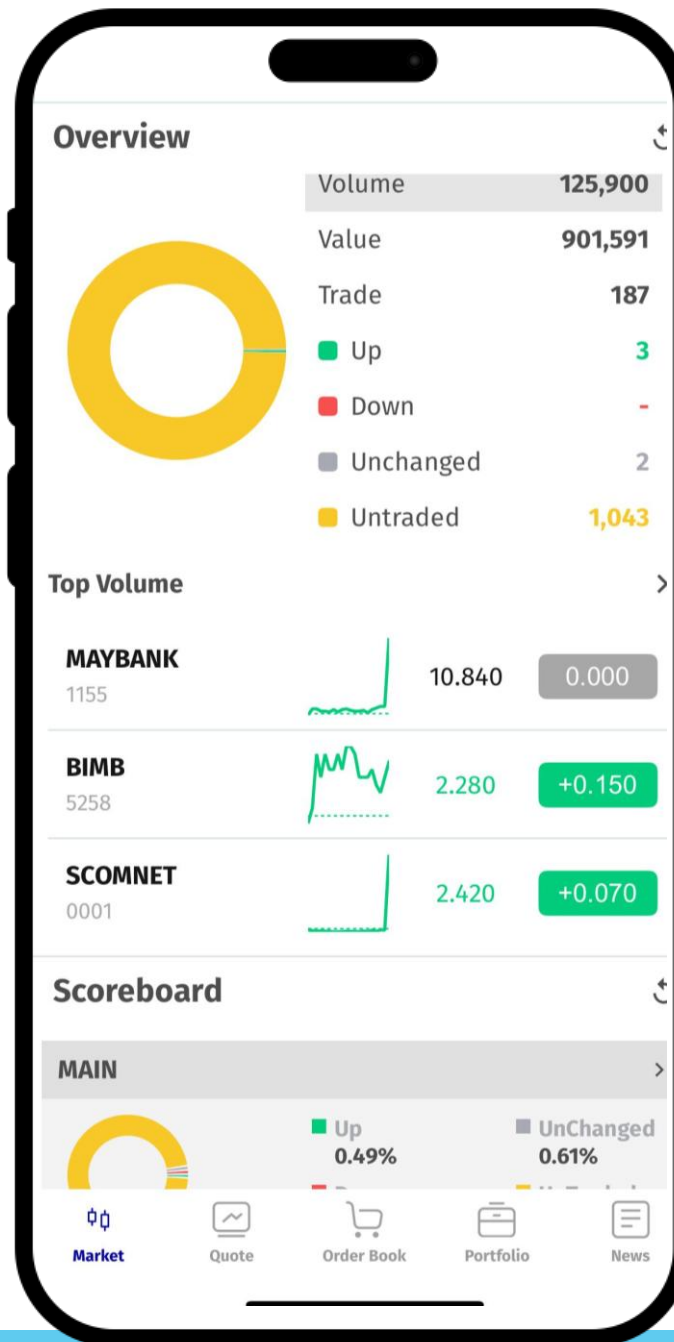


Tap the chart to **expand it in landscape mode** for a clearer, full-screen view.



Overview

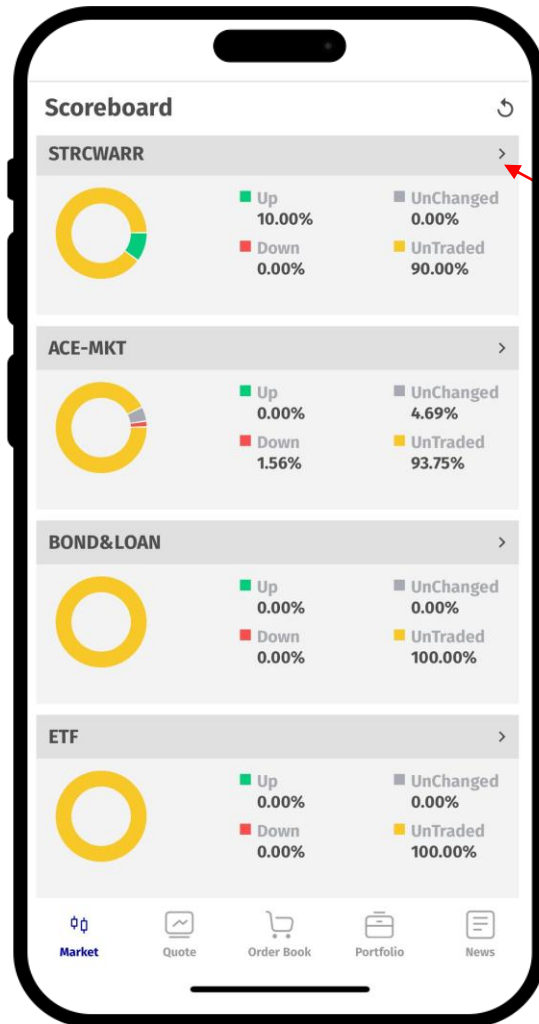
Just select a metric (for example, **volume**) and it will immediately show the **top three stocks** based on that metric.



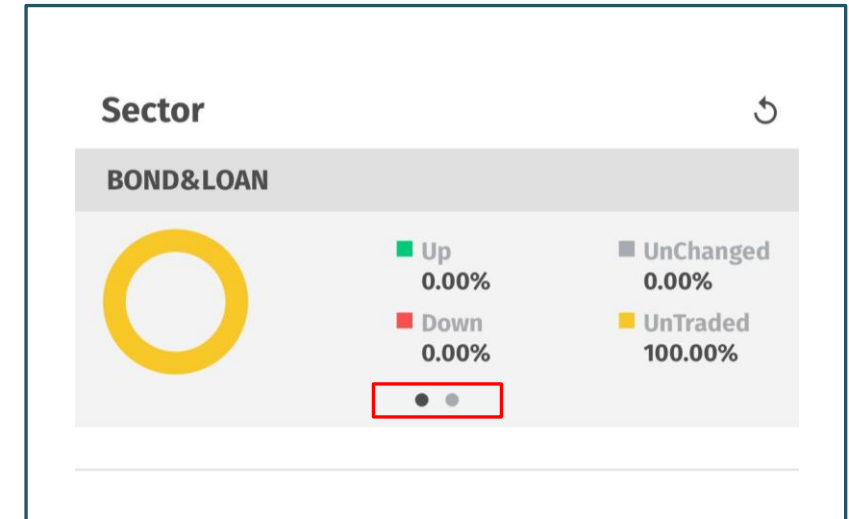
A snapshot of today's market health and movements.

Scoreboard

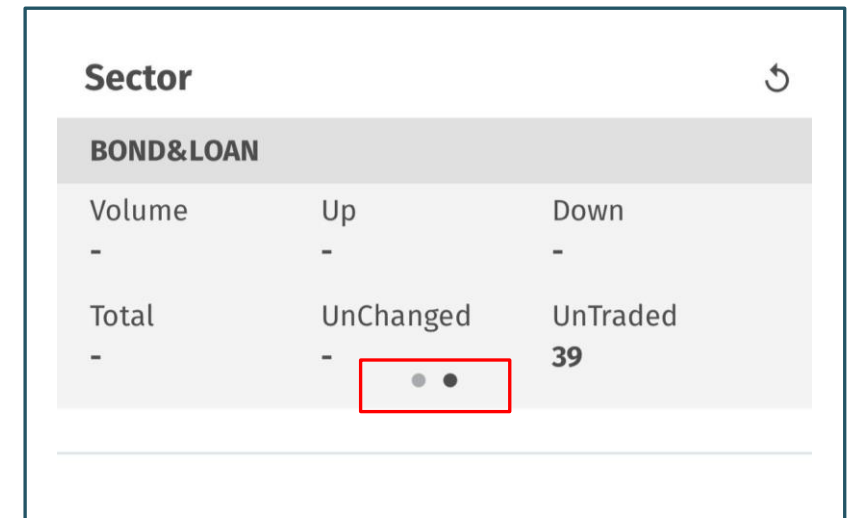
The Scoreboard shows how many stocks in each sector are up, down, unchanged, or not traded.



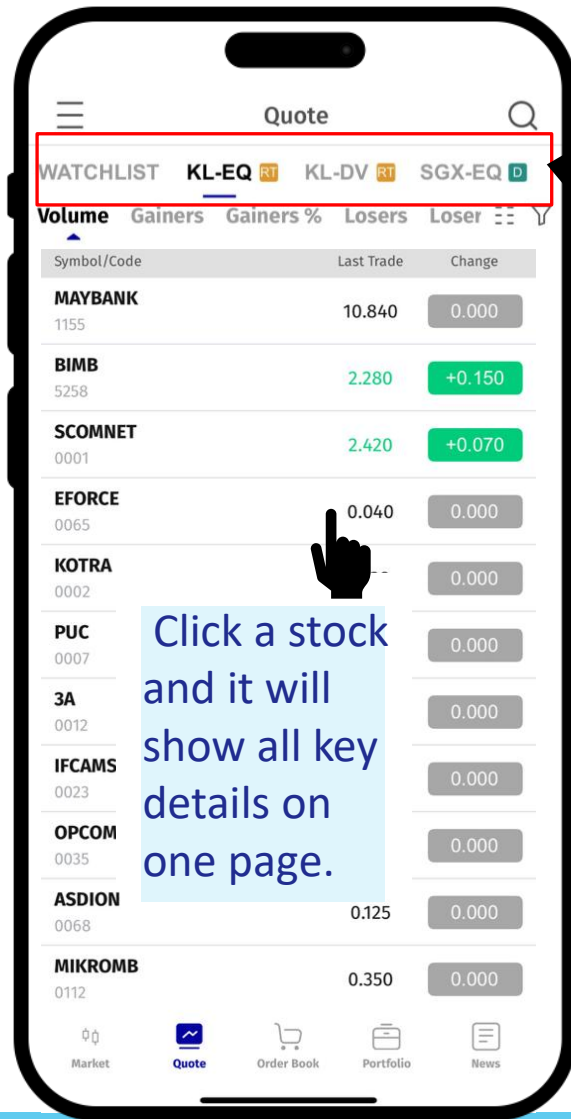
Tap **“Details”** to open a list of each sector’s sub-sectors.



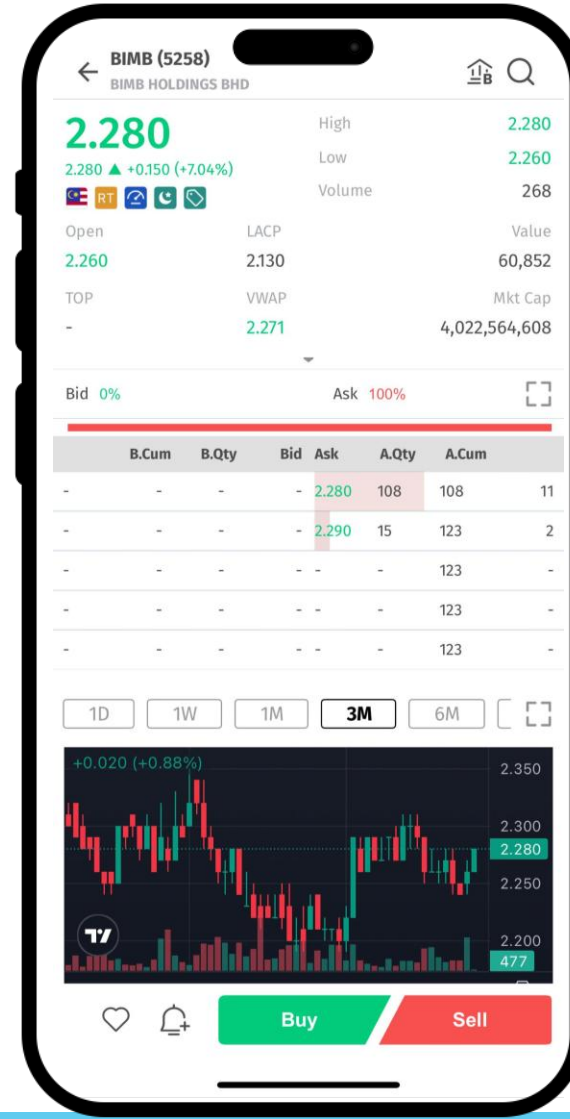
Swipe left to see the exact numbers and **swipe right** to view the percentage breakdown in a **pie chart**.



Access & Explore Stocks – View Market Info



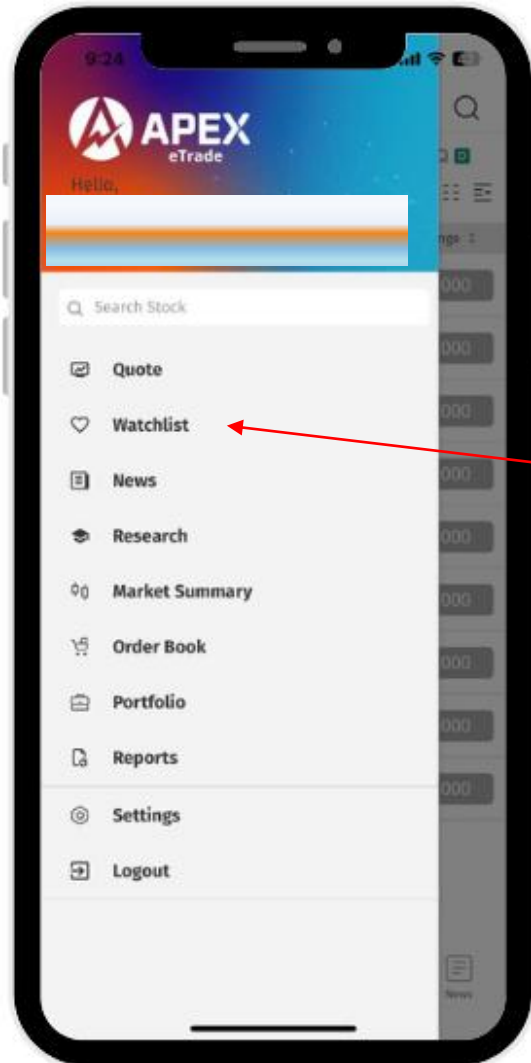
Swipe to the right to access other exchanges.



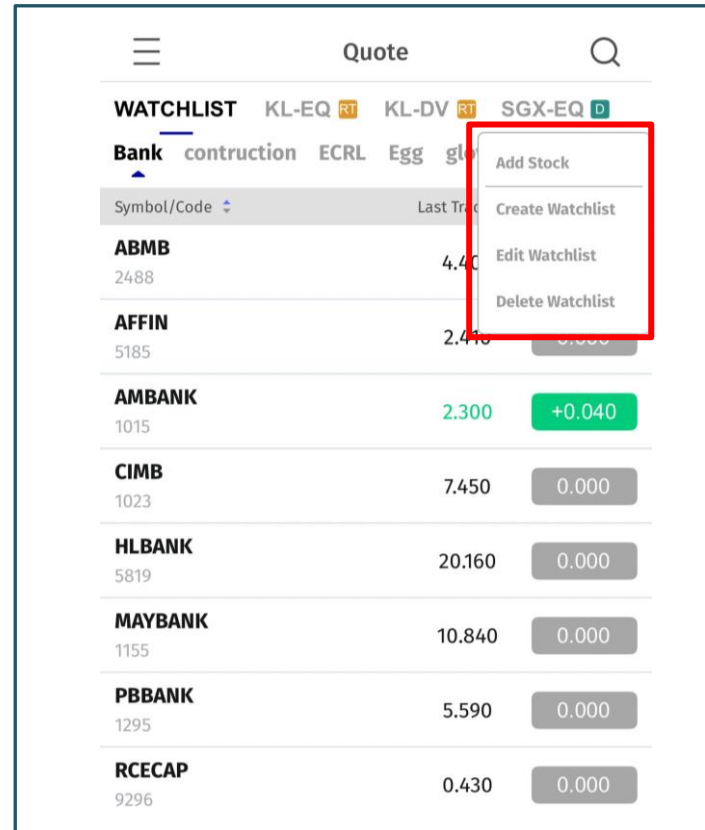
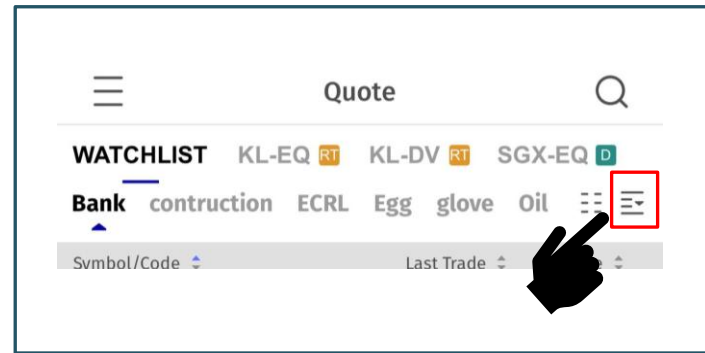
Scroll down for more info and use the sub-menu.



Watchlist



Click Menu and
select
“Watchlist”



- **Create Watchlist** - manage your watchlist to easily keep track of your preferred stocks.
- **Add stock** - Type the stock name or code, then choose the one from the list.
- **Edit Watchlist** - to add, remove, or rearrange stocks in your watchlist.
- **Delete Watchlist** - to remove an entire watchlist that you no longer need.

Order Placement

Trading Account
Switch your trading account here if needed.

Select the tab to view the following:

Portfolio: View your current holdings for the selected stock.

Orders: See any existing orders placed for this counter.

BIMB (5258)
2.280 ▲ +0.150 (+7.04%)

Bid 18% Ask 82%

	B.Cum	B.Qty	Bid	Ask	A.Qty	A.Cum	
3	27	27	2.270	2.290	64	64	5
-	27	-	-	2.300	55	119	6
-	27	-	-	-	-	119	-
-	27	-	-	-	-	119	-
-	27	-	-	-	-	119	-

Trading Limit: MYR 29,700.00

Direction: **Buy** Sell Validity: Day Order Type: Limit

Price: 2.280 Qty (x100): 1 Sett.Curr: MYR

Min Qty:

☐ IDSS

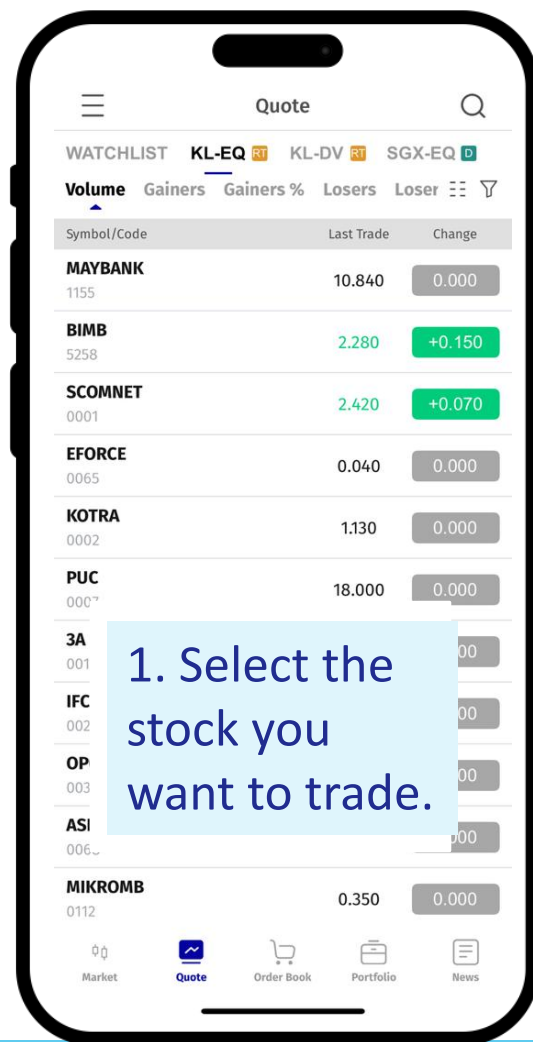
Portfolio Orders

Symbol/Code	Qty.H Qty.A	Mkt.P Avg.P	GL GL(%)
-------------	----------------	----------------	-------------

Submit

Toggle to the **Odd Lot Market** tab to submit orders for odd lot quantities.

Quick & Easy Order Entry



Direction: **Buy** / Sell

Validity: Day

Order Type: Limit

Price: 2.280

Qty (x100): 1

Sett.Curr: MYR

Min Qty:

☐ IDSS

Leave the "Min Qty" field blank.

Portfolio Orders

Symbol/Code	Qty.H Qty.A	Mkt.P Avg.P	GL GL(%)
-------------	----------------	----------------	-------------

2. Enter your order details and click **Submit**.

Submit

BIMB (5258)
2.280 ▲ +0.150 (+7.04%)

Direction: Buy

Account: 3JB3043

Trading Limit: MYR 29,700.00

Forex Limit: MYR 100,000

Validity: Day

Order Type: Limit

Order Qty (Unit): 100

Order Price: MYR 2.280

Order Value: MYR 228.00

Settlement Currency: MYR

Min Qty (Unit): -

3. Enter your Trading PIN

Verification

Please enter your PIN to continue

☐ Remember PIN

Please ensure your device is connected to a stable internet connection for successful order submissions.

1 2 3

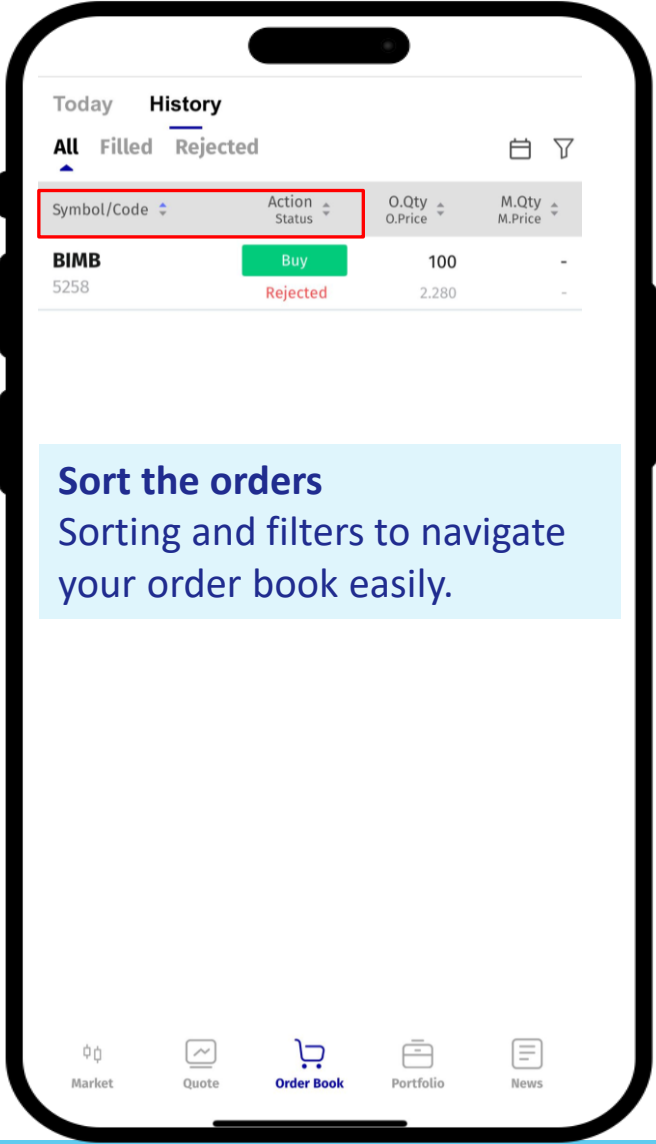
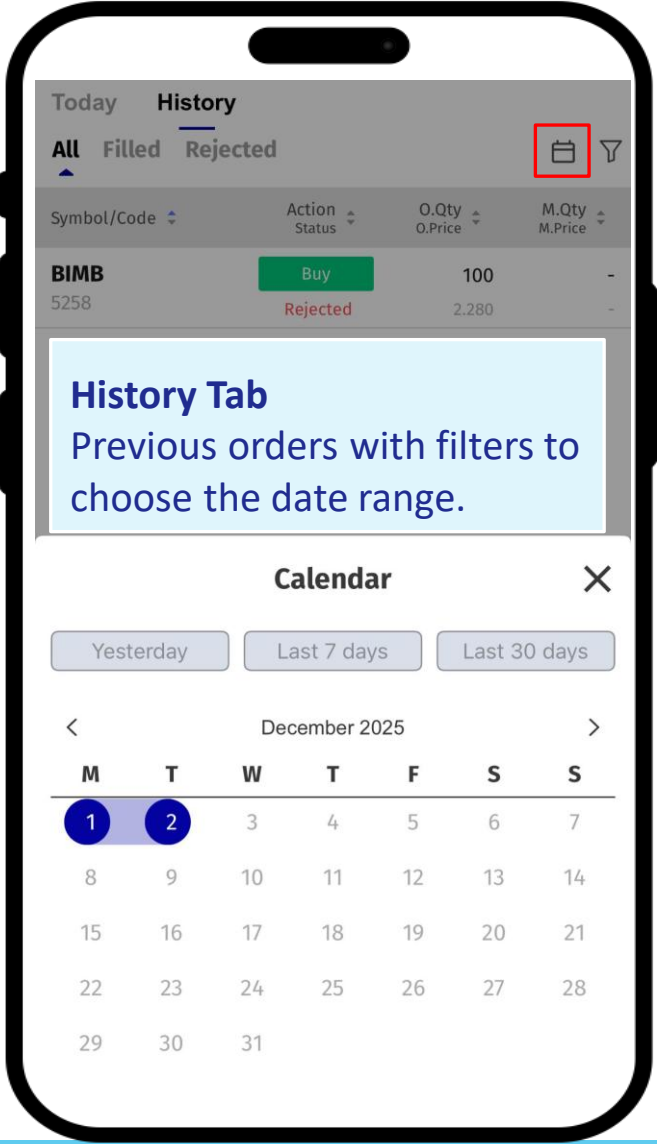
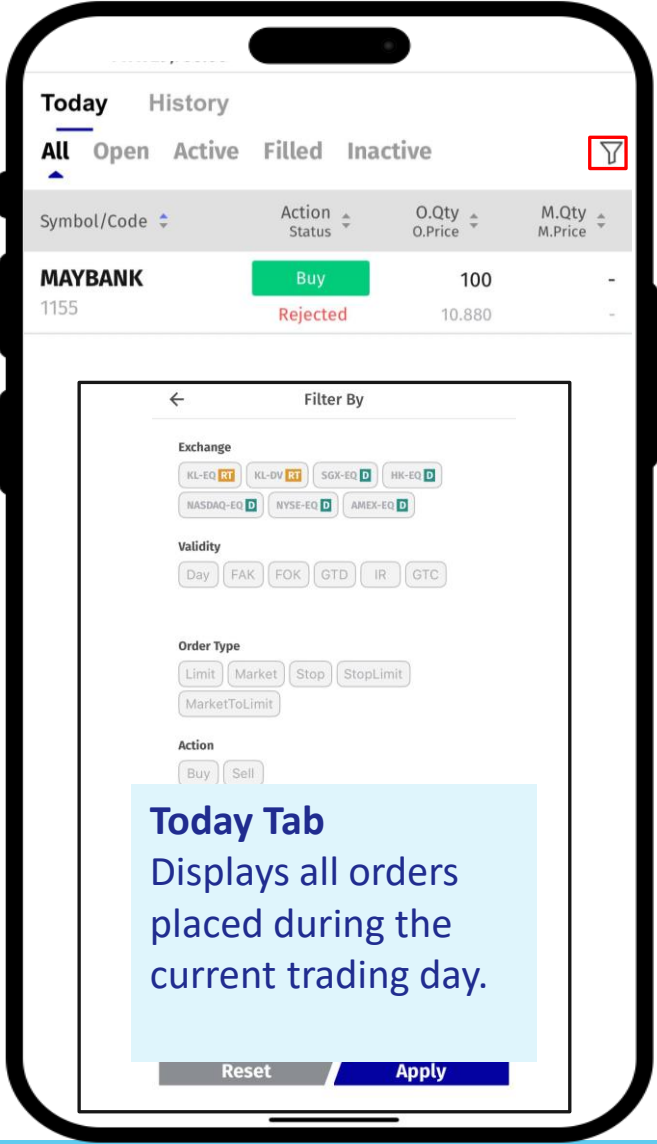
4 5 6

7 8 9

0

Submit

Order Book



Portfolio

Unrealised G/L

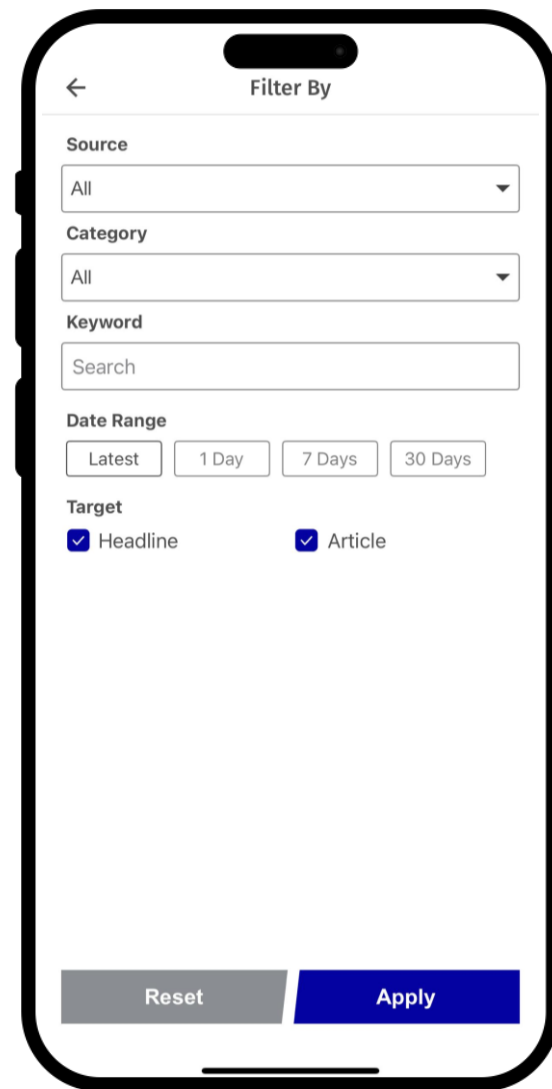
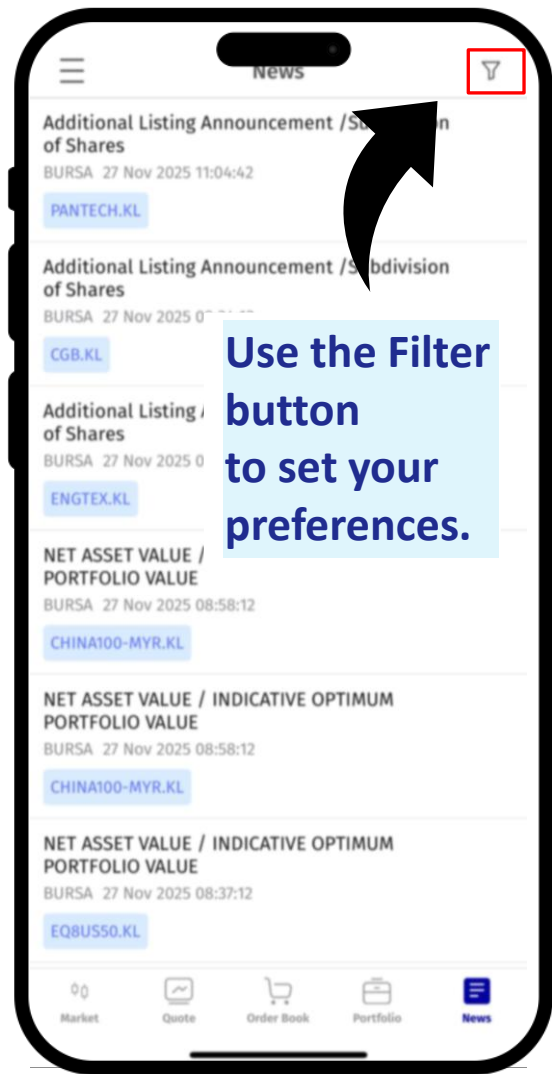
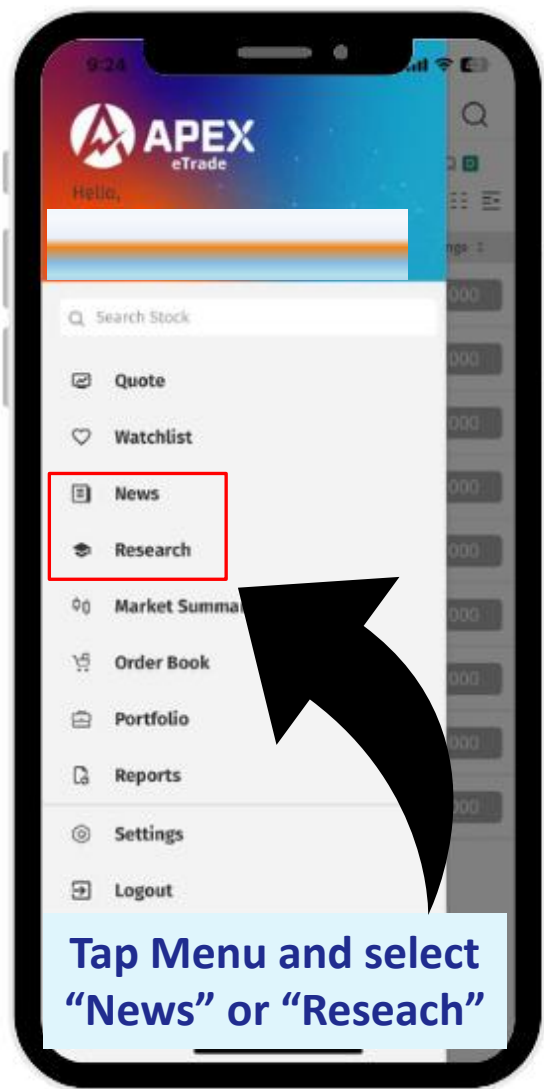
Displays the profit or loss of your **current holdings** based on the latest market prices.

Realised G/L

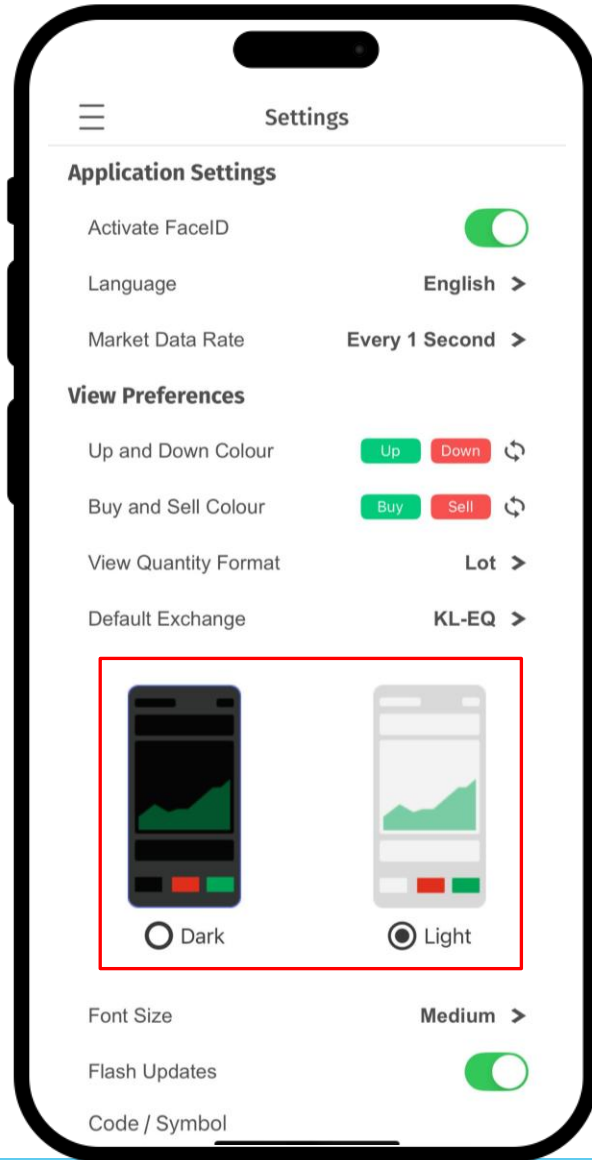
Shows the profit or loss from **positions you have already closed**.

Unrealised G/L		Realised G/L					
All		KL-EQ	KL-DV	SGX-EQ	HK-EQ	NASDAQ-EQ	I
Symbol/Code	Qty.H Qty.Sold	Avg.BP Avg.SP	GL GL(%)				
CIMB	5,000	3.680	-350.00				
1023	5,000	3.610	-1.90%				
DATAPRP	60,000	0.222	600.00				
8338	60,000	0.232	+4.49%				
DAYANG	10,000	1.410	100.00				
5141	10,000	1.420	+0.71%				
DESTINI	10,000	0.325	-350.00				
7212	10,000	0.290	-10.77%				
DOLPHIN	30,000	0.150	-300.00				
5265	30,000	0.140	-6.67%				
DUFU	2,000	1.640	40.00				
7233	2,000	1.660	+1.22%				
ECOWLD	20,000	0.415	-300.00				
8206	20,000	0.400	-3.61%				
EDEN	35,000	0.215	-350.00				
7471	35,000	0.205	-4.65%				
EURO	60,000	0.185	1,142				
7208	60,000	0.204	+10.28%				
Total Gain/Loss		MYR 17,475.00		Portfolio Disclaimer			
		(+4.60%)					
Market		Quote		Order Book		Portfolio	
News							

News & Research News



Settings

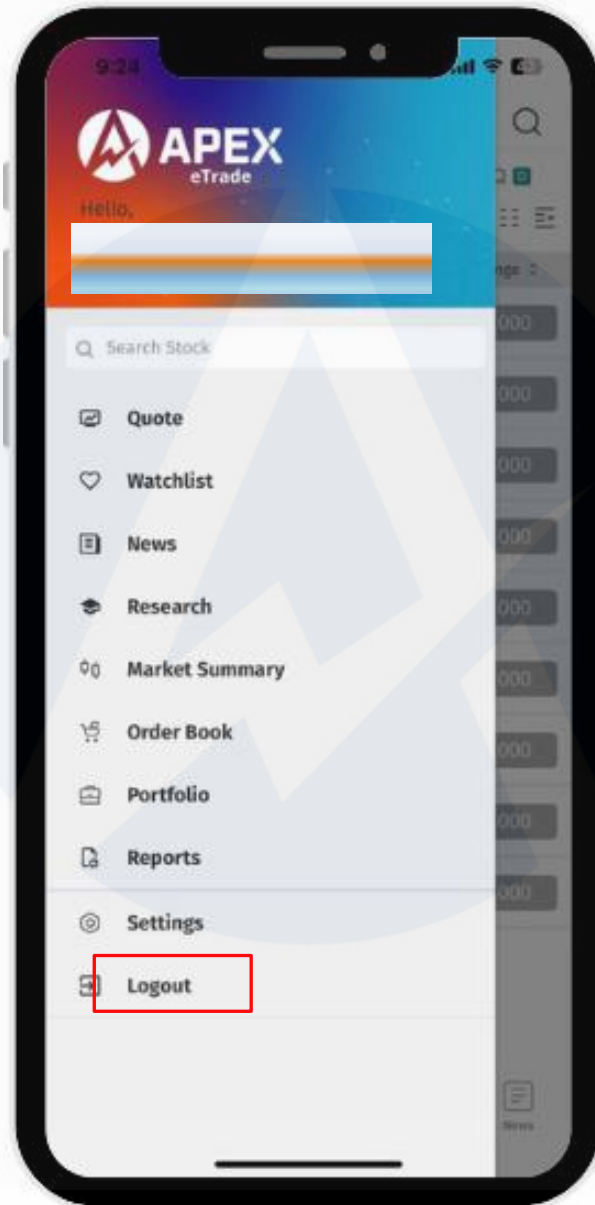


Dark View / Light View

Toggle between **dark mode** and **light mode** to match your visual comfort or the surrounding lighting conditions.

Font Size

Adjust the font size to **small**, **medium**, or **large** to enhance readability according to your preference.



LOG OUT

Select **Log Out** to securely end your session.



03-7890 8811



apextrade@apexsecurities.com.my